

**LOWA**  
100% HANDCRAFTED IN EUROPE



2017

OUTDOOR COLLECTION  
**TASK FORCE**

Tradition and innovation since 1923

# TASK FORCE



ZEPHYR GTX® HI TF

Proven. Tested. Worthy. Our new Task Force Collection features the legendary performance, comfort and durability that have made the LOWA brand synonymous with quality for over 90 years. For 2017, we've expanded our offering of lighter weight, multifunction **Zephyr** and **Z-Series** models to include more boot heights, colors and lining options – and, as always, all LOWAs are 100% Handcrafted in Europe.

LOWA is the only outdoor boot manufacturer to be granted ISO 9001 status for highest quality manufacturing processes.



© Copyright - Powered by Tasmanian Tiger

## INNOX EVO TF NEW

MSRP \$145



The next step in lightweight trail shoe design, this athletically inspired style is a great warm weather trail shoe for moving fast and light. An open mesh, seamless upper construction is set on set on our proprietary DynaPU® PU midsole for lightweight cushioning, durability and comfort.

Upper: Seamless Synthetic

Lining: Breathable Quick-drying Polyester

Midsole: DynaPU® w/ MONOWRAP® Frame

Outsole: LOWA Enduro Evo

Stabilizer: ¾ Length, Soft

Weight: 640 grams



310 648 0999	black	7.5-12, 13, 14
310 648 0737	wolf	7.5-12, 13, 14
310 648 0736	coyote	7.5-12, 13, 14



### INNOX MID TF

MSRP \$200



A lightweight multiuse boot designed for warmer, dryer conditions. Provides lightweight support and stability. Made on an NXT sole for traction and durability. Great for moving quickly, even with a heavy pack.

**Upper:** Synthetic  
**Lining:** Quick Drying Fabric  
**Midssole:** DuraPU™ w/ MONOWRAP® Frame  
**Outsole:** LOWA NXT  
**Stabilizer:** ¾ Length, Medium  
**Weight:** 920 grams



310 605 0736 coyote 7.5-12, 13, 14

### INNOX GTX® MID TF

MSRP \$220



Offers lightweight support with a wrapped upper on our injected PU midsole and PU MONOWRAP® frame construction for stability. Made with a NXT sole for traction and durability. Great for moving quickly, even with a heavy pack. Durably waterproof/breathable.

**Upper:** Synthetic  
**Lining:** GORE-TEX®  
**Midssole:** DuraPU™ w/ MONOWRAP® Frame  
**Outsole:** LOWA NXT  
**Stabilizer:** ¾ Length, Medium  
**Weight:** 920 grams



310 608 0736 coyote 7.5-12, 13, 14  
 310 608 0999 black 7.5-12, 13, 14

### INNOX GTX® LO TF

MSRP \$200



The ultimate stability-oriented trail shoe! Made with a light synthetic upper with support bands. Super stable trail platform with injected PU midsole and PU MONOWRAP® frame construction and LOWA NXT sole for traction. Durably waterproof/breathable.

**Upper:** Synthetic  
**Lining:** GORE-TEX®  
**Midssole:** DuraPU™ w/ MONOWRAP® Frame  
**Outsole:** LOWA NXT  
**Stabilizer:** ¾ Length, Medium  
**Weight:** 790 grams



310 609 0999 black 7.5-12, 13, 14



## ZEPHYR GTX® LO TF NEW

MSRP \$180



Zephyr Desert Mid TF is a great three-season trail or duty shoe for service personnel. PU MONOWRAP® frame with supportive PU midsole and LOWA Cross sole provide all-day comfort. Durably waterproof/breathable.

**Upper:** Split Leather/CORDURA®  
**Lining:** GORE-TEX®  
**Midsole:** DuraPU™ w/ MONOWRAP® Frame

**Outsole:** LOWA Cross  
**Stabilizer:** ¾ Length, Soft  
**Weight:** 960 grams



<b>310 589 0999</b>	black	7.5-12, 13, 14
<b>310 589 0731</b>	coyote OP	7.5-12, 13, 14

## ZEPHYR DESERT MID TF NEW COLOR

MSRP \$185



A great hiking or duty boot for warmer, dryer conditions. PU MONOWRAP® frame with supportive PU midsole and LOWA Cross sole provide all-day comfort.

**Upper:** Split Leather/CORDURA®  
**Lining:** Quick Drying Fabric  
**Midsole:** DuraPU™ w/ MONOWRAP® Frame

**Outsole:** LOWA Cross  
**Stabilizer:** ¾ Length, Soft  
**Weight:** 1090 grams



<b>310 535 0411</b>	desert	7.5-12, 13, 14
<b>310 535 0411</b>	coyote OP	7.5-12, 13, 14

ZEPHYR GTX® MID TF *NEW COLOR*

MSRP \$200



Zephyr GTX® Mid TF is a great 3 season hiking boot or a duty boot for service personnel. PU MONOWRAP® frame with comfortable underfoot PU midsole and LOWA Cross sole provide all day comfort. Durably waterproof/breathable. *"The Zephyr GTX® boot is rugged, supportive and waterproof. Easily capable of performing, and excelling in some of the harshest environments. What more could you ask for in a lightweight hiking boot? .... these boots are definitely not a budget item, but easily worth every penny."* – letstalksurvival.com, September 2015

Upper: Split Leather/CORDURA®

Outsole: LOWA Cross

Lining: GORE-TEX®

Stabilizer: ¾ Length, Soft

Midsole: DuraPU™ w/ MONOWRAP® Frame

Weight: 1100 grams



<b>310 537 0999</b>	black	7.5-12, 13, 14
<b>310 537 0411</b>	desert	7.5-12, 13, 14

<b>310 537 0731</b>	coyote OP	7.5-12, 13, 14
<b>310 537 0934</b>	sage	7.5-12, 13, 14

ZEPHYR GTX® MID TF WS

MSRP \$200



Zephyr GTX® Mid TF is a great 3 season hiking boot or a duty boot for service personnel. PU MONOWRAP® frame with comfortable underfoot PU midsole and LOWA Cross sole provide all day comfort. Durably waterproof/breathable. Made on a women's-specific last.

Upper: Split Leather/CORDURA®

Outsole: LOWA Cross

Lining: GORE-TEX®

Stabilizer: ¾ Length, Soft

Midsole: DuraPU™ w/ MONOWRAP® Frame

Weight: 890 grams



<b>320 537 0410</b>	desert	5.5-11
<b>320 537 9999</b>	black	5.5-11
<b>320 537 0731</b>	coyote OP	5.5-11

**ZEPHYR HI TF** NEW

MSRP \$220



Lightweight, tall desert boot for warm and dry conditions. Supportive PU MONOWRAP® frame technology.

**Upper:** Split Leather/CORDURA®

**Lining:** Quick Drying Fabric

**Midssole:** DuraPU™ w/ MONOWRAP® Frame

**Outsole:** LOWA CROSS

**Stabilizer:** ¾ Length, Soft

**Weight:** 1190 grams



310 531 0731    coyote OP    7.5-12, 13, 14

**ZEPHYR GTX® HI TF**

MSRP \$235



Lightweight, tall, durably waterproof/breathable desert boot with supportive PU MONOWRAP® frame technology. Durably waterproof/breathable.

**Upper:** Split Leather/CORDURA®

**Lining:** GORE-TEX®

**Midssole:** DuraPU™ w/ MONOWRAP® Frame

**Outsole:** LOWA CROSS

**Stabilizer:** ¾ Length, Stiff

**Weight:** 1200 grams



310 532 0410    desert    7.5-12, 13, 14  
 310 532 0934    sage    7.5-12, 13, 14  
 310 532 0999    black    7.5-12, 13, 14



310 532 0736    coyote    7.5-12, 13, 14  
 310 532 0731    coyote OP    7.5-12, 13, 14



**Z-6S / Z-6S WS** *NEW COLOR*

MSRP \$285



A mid-cut multifunction boot designed for warm and dry conditions when light weight and durability are paramount. Extra supportive PU MONOWRAP® construction keeps weight down, provides instep protection against rope abrasion while rappelling. Split leather upper. Women's model made on a women's-specific last.

**Upper:** Split Leather/CORDURA®

**Lining:** Dri-Lex®/3D

**Midsole:** DuraPU™ w/ MONOWRAP® Frame

**Outsole:** LOWA Cross Duty

**Stabilizer:** Full Length Nylon, Hard

**Weight:** 1310 grams



310 669 0410	desert	7.5-12, 13, 14
320 669 0410	desert	5-7
310 669 0731	coyote OP	7.5-12, 13, 14
320 669 0731	coyote OP	5-7

**Z-6S GTX® / Z-6S GTX® WS**

MSRP \$300



A mid-cut multifunction boot designed for harsh conditions when light weight and durability are paramount. Extra supportive PU MONOWRAP® construction keeps weight down, provides instep protection against rope abrasion while rappelling. Split leather upper, durably waterproof/breathable. Women's model made on a women's-specific last. *"...a really good all-around, general use boot for light to medium loads."* – MilitaryMorons.com, 2016

**Upper:** Split Leather/CORDURA®

**Lining:** GORE-TEX®

**Midsole:** DuraPU™ w/ MONOWRAP® Frame

**Outsole:** LOWA Cross Duty

**Stabilizer:** Full Length Nylon, Hard

**Weight:** 1320 grams



310 668 0410	desert	7.5-12, 13, 14, 15, 16
320 668 0410	desert	5-7
310 668 0999	black	7.5-12, 13, 14, 15, 16
320 668 0999	black	5-7

310 668 0934	sage	7.5-12, 13, 14, 15, 16
320 668 0934	sage	5-7
310 668 0493	dark brown	7.5-12, 13, 14, 15, 16
320 668 0493	dark brown	5-7

## Z-8S / Z-8S WS

MSRP \$300



A higher-shafted multifunction boot designed for warm and dry conditions when light weight and durability are paramount. Extra supportive PU MONOWRAP® construction keeps weight down, provides instep protection against rope abrasion while rappelling. Split leather upper.

Upper: Split Leather/CORDURA®

Lining: Dri-Lex®/3D

Midsole: DuraPU™ w/ MONOWRAP® Frame

Outsole: LOWA Cross Duty

Stabilizer: Full Length Nylon, Hard

Weight: 1400 grams / 1200 grams



<b>310 666 0736</b>	coyote	7.5-12, 13, 14, 15, 16
<b>310 666 0410</b>	desert	7.5-12, 13, 14, 15, 16
<b>320 666 0410</b>	desert	5-7

## Z-8S GTX® / Z-8S GTX® WS

MSRP \$325



A higher-shafted multifunction boot designed for harsh conditions when light weight and durability are paramount. Extra supportive PU MONOWRAP® construction keeps weight down, provides instep protection against rope abrasion while rappelling. Split leather upper, durably waterproof/breathable.

Upper: Split Leather/CORDURA®

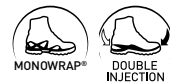
Lining: GORE-TEX®

Midsole: DuraPU™ w/ MONOWRAP® Frame

Outsole: LOWA Cross Duty

Stabilizer: Full Length Nylon, Hard

Weight: 1400 grams / 1200 grams



<b>310 664 0493</b>	dark brown	7.5-13, 14, 15, 16
<b>320 664 0493</b>	dark brown	5-7
<b>310 664 0410</b>	desert	7.5-13, 14, 15, 16
<b>320 664 0410</b>	desert	5-7
<b>310 664 0731</b>	coyote OP	7.5-12, 13, 14, 15, 16

## Z-8N GTX®

MSRP \$350



A higher-shafted multifunction boot designed for harsh conditions when light weight and durability are paramount. Extra supportive PU MONOWRAP® construction keeps weight down, provides instep protection against rope abrasion while rappelling. Nubuck leather upper for added durability, durably waterproof/breathable.

Upper: Nubuck/CORDURA®

Lining: GORE-TEX®

Midsole: DuraPU™ w/ MONOWRAP® Frame

Outsole: LOWA Cross Duty

Stabilizer: Full Length Nylon, Hard

Weight: 1420 grams



<b>310 660 0999</b>	black	7.5-13, 14, 15, 16
---------------------	-------	--------------------



## Z-11S GTX®

MSRP \$350



An extra-high shafted multifunction boot designed for harsh conditions when lighter weight and durability are paramount. Extra supportive PU MONOWRAP® construction keeps weight down, provides instep protection against rope abrasion while rappelling. Durably waterproof/breathable. Features an 11" shaft for extra ankle support and protection.

**Upper:** Split Leather/CORDURA®

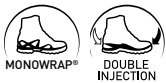
**Lining:** GORE-TEX®

**Midsole:** DuraPU™ w/ MONOWRAP® Frame

**Outsole:** LOWA Cross Duty

**Stabilizer:** Full Length Nylon, Hard

**Weight:** 1500 grams



310 665 0493    dark brown    7.5-13, 14, 15, 16

## UPLANDER GTX® TF

MSRP \$300



Lightweight duty boot with tall shaft for support and protection. Full grain leather uppers with CORDURA®, available with durably waterproof/breathable GORE-TEX® lining or quick drying fabric lining option.

**Upper:** Full Grain Leather/CORDURA®

**Lining:** GORE-TEX®

**Midsole:** Supportive DuraPU™

**Outsole:** VIBRAM® Vialta

**Stabilizer:** 2/3 Length, Medium

**Weight:** 1350 grams



310 243 0999    black    8-12, 13, 14, 15



## ELITE DESERT

MSRP \$330 / \$340 - EXTRA



So tough, breathable and lightweight that it's used by the British M.O.D. under the harshest desert conditions. Durable rubber toe cap for protection in rough terrain.

**Upper:** 2.0-2.2 mm Split Leather/CORDURA®

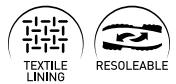
**Lining:** Quick Drying Fabric

**Midsole:** Supportive DuraPU™

**Outsole:** VIBRAM® AppTrail

**Stabilizer:** 5mm Nylon, Medium

**Weight:** 1650 grams



<b>210 878 0410</b>	desert	7.5-12, 13, 14
<b>260 878 0410</b>	desert	15, 16 - EXTRA
<b>230 062 7299</b>	desert	8-12, 13, 14 - WXL-WIDE
<b>210 878 0731</b>	coyote OP	7.5-12, 13, 14
<b>210 878 0493</b>	dark brown	8-12, 13, 14

## ELITE DESERT WS

MSRP \$330



So tough, breathable and lightweight that it's used by the British M.O.D. under the harshest desert conditions. Durable rubber toe cap for protection in rough terrain. Made on a women's-specific last.

**Upper:** 2.0-2.2 mm Split Leather/CORDURA®

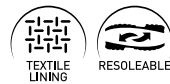
**Lining:** Quick Drying Fabric

**Midsole:** Supportive DuraPU™

**Outsole:** VIBRAM® MVS

**Stabilizer:** 5mm Nylon, Medium

**Weight:** 1350 grams



<b>220 878 0410</b>	desert	6-10.5
---------------------	--------	--------

## ELITE MOUNTAIN GTX®

MSRP \$360



We've added durably waterproof/breathable protection to the Elite Desert's acclaimed design – the result is a super-tough tactical boot that can take on anything the mountains throw at it.

**Upper:** 2.5-2.7 mm Full Grain Leather

**Lining:** GORE-TEX®

**Midsole:** Supportive DuraPU™

**Outsole:** VIBRAM® MVS

**Stabilizer:** 5mm Nylon, Medium

**Weight:** 1600 grams



<b>210 890 0493</b>	dark brown	8-12, 13, 14
---------------------	------------	--------------

# MEGA CAMP

MSRP \$380



Higher-shafted heavy duty boot provides extra support for carrying big loads over tough terrain. Glove leather-lined for superb moisture wicking in hot, dry climates.

Upper: 2.5-2.7 mm Full Grain Leather  
Lining: Glove Leather  
Midsole: Supportive DuraPU™

Outsole: VIBRAM® Tsavo  
Stabilizer: 5mm Nylon, Hard  
Weight: 1920 grams



211 780 0999    black    7-12, 13, 14

# COMBAT BOOT GTX® PT

MSRP \$420



Tall ankle shaft for extra support in difficult terrain and when carrying heavy loads. Durably waterproof/breathable.

Upper: 2.5-2.7 mm Full Grain Leather  
Lining: GORE-TEX®  
Midsole: Supportive DuraPU™

Outsole: VIBRAM® Tsavo  
Stabilizer: 5mm Nylon, Hard  
Weight: 1890 grams



211 868 0999    black    8-12, 13, 14







**LOWA**

86 Viaduct Road  
Stamford, CT 06907

**LOWA**  
100% HANDCRAFTED IN EUROPE

[www.lowaboos.com](http://www.lowaboos.com) f @ t v

Tel: 203 353 0116 | Toll Free: 888 335 5692 | Fax: 203 353 0311



LOWA boots are warranted to be free from defects in workmanship and materials for a period of 12 months from the date of purchase. Your exclusive remedy for break of such warranty is repair or replacement of your LOWA boots at LOWA's discretion. If your LOWA boots need repair or replacement due to defect in workmanship or materials, simply return them to the LOWA dealer where you purchased them. You will need proof of purchase. Make sure that your return request falls within 12 months from the date of purchase.

- See our website at [www.lowaboos.com](http://www.lowaboos.com) for directory listing of our dealers and warranty FAQ's. Please note that fit, paint thinner and lawn chemicals void the warranty.
- "Fit" is not covered in the warranty. You do the fitting, not us!

All product weights are based on men's 9 and women's 6.5. Color and product details subject to change. MSRP - this pricing is subject to change without notice. Actual colors may vary from printed catalog. Additional product descriptions and tech specifications available at [www.lowaboos.com/about/](http://www.lowaboos.com/about/) GORE-TEX®, GTX®, GORE®, GUARANTEED TO KEEP YOU DRY®, SURROUND® and design are registered trademarks of W.L. Gore & Associates Inc. VIBRAM®, the Octagon Logo, and the Yellow Octagon Logo and the color Canary Yellow are registered trademarks of Vibram S.p.A. © 2017 LOWA Boots, LLC.